

BOARD UPDATE

PROSPER INDEPENDENT SCHOOL DISTRICT



JOYCE HALL ELEMENTARY SCHOOL (ES #15)

AS OF MAY 2022

WORK COMPLETED AND ONGOING:

Site

- Landscaping installation ongoing
- Sidewalk installation ongoing at the storm shelter
- Playground surfacing to begin shortly
- Canopy installation ongoing
- Exterior masonry installation ongoing at main entry tower

Building

- Exterior door installation at storm shelter
- Kitchen equipment deliveries and installation ongoing
- Floor tile installation ongoing at main corridor and cafeteria
- Millwork complete – Areas 2 and 3
- Installation of ceiling grid, lights, and diffusers ongoing – Areas 2 and 3
- Installation of plumbing fixtures and toilet accessories ongoing – Areas 1, 2, 3, and 4
- Tape, bed, and texture ongoing – Areas 1 and 2

Aerial - Looking Northeast



BOARD UPDATE

PROSPER INDEPENDENT SCHOOL DISTRICT



JOYCE HALL ELEMENTARY SCHOOL (ES #15)

AS OF MAY 2022

Aerial - Looking Northwest



Aerial - Looking Southeast



BOARD UPDATE

PROSPER INDEPENDENT SCHOOL DISTRICT



JOYCE HALL ELEMENTARY SCHOOL (ES #15)

AS OF MAY 2022

Aerial - Looking Southwest



Main Entry



BOARD UPDATE

PROSPER INDEPENDENT SCHOOL DISTRICT



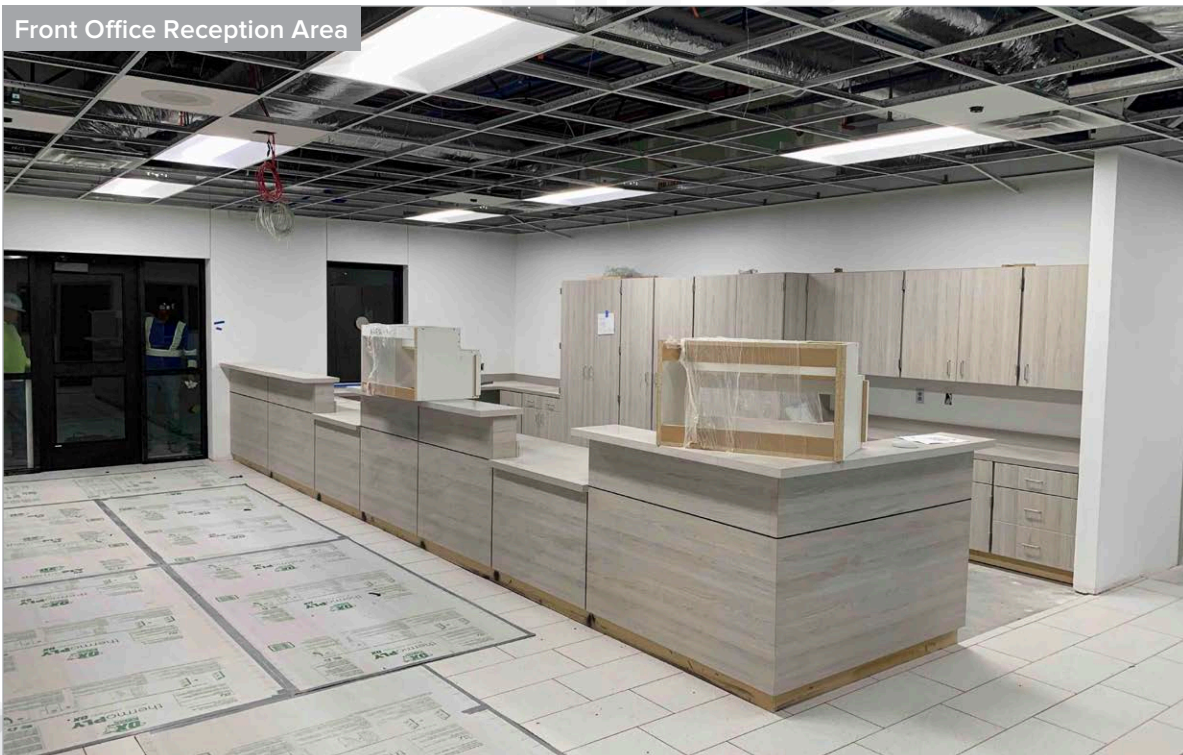
JOYCE HALL ELEMENTARY SCHOOL (ES #15)

AS OF MAY 2022

Main Entry Corridor



Front Office Reception Area



BOARD UPDATE

PROSPER INDEPENDENT SCHOOL DISTRICT



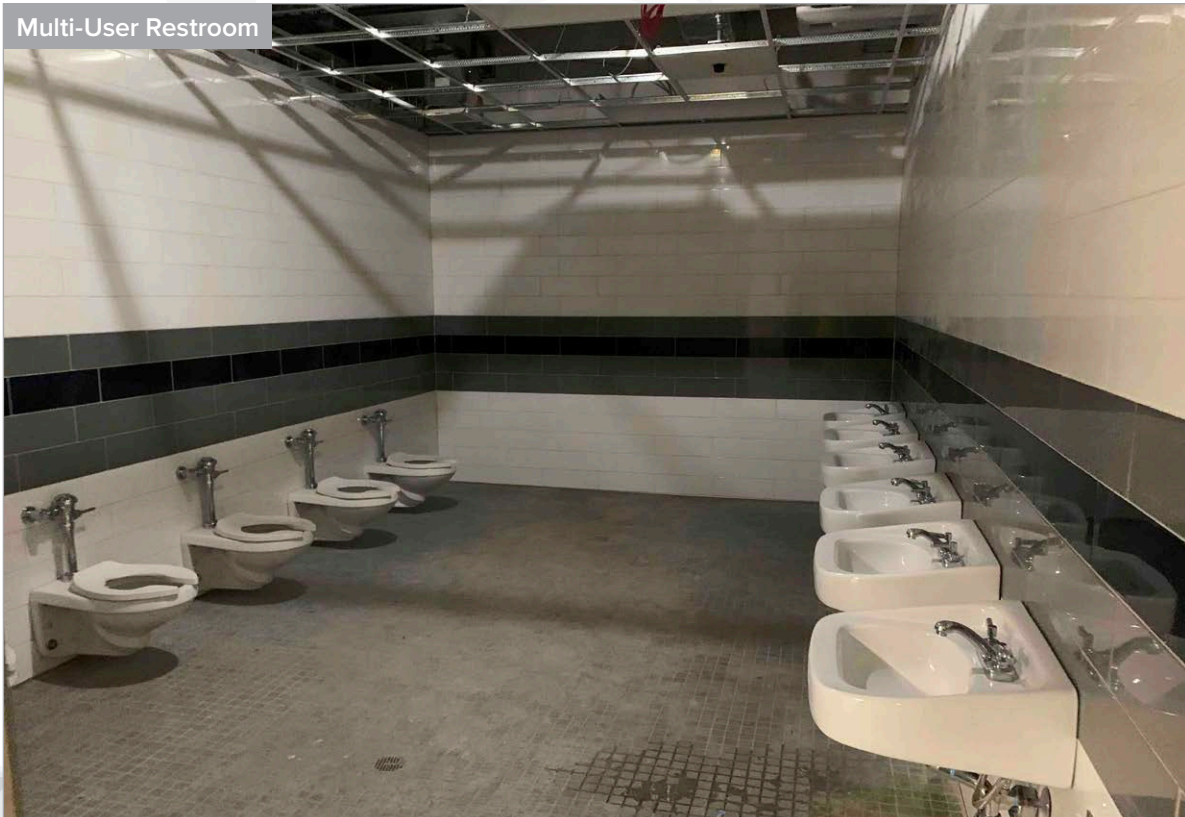
JOYCE HALL ELEMENTARY SCHOOL (ES #15)

AS OF MAY 2022

Academic Corridor



Multi-User Restroom



BOARD UPDATE

PROSPER INDEPENDENT SCHOOL DISTRICT



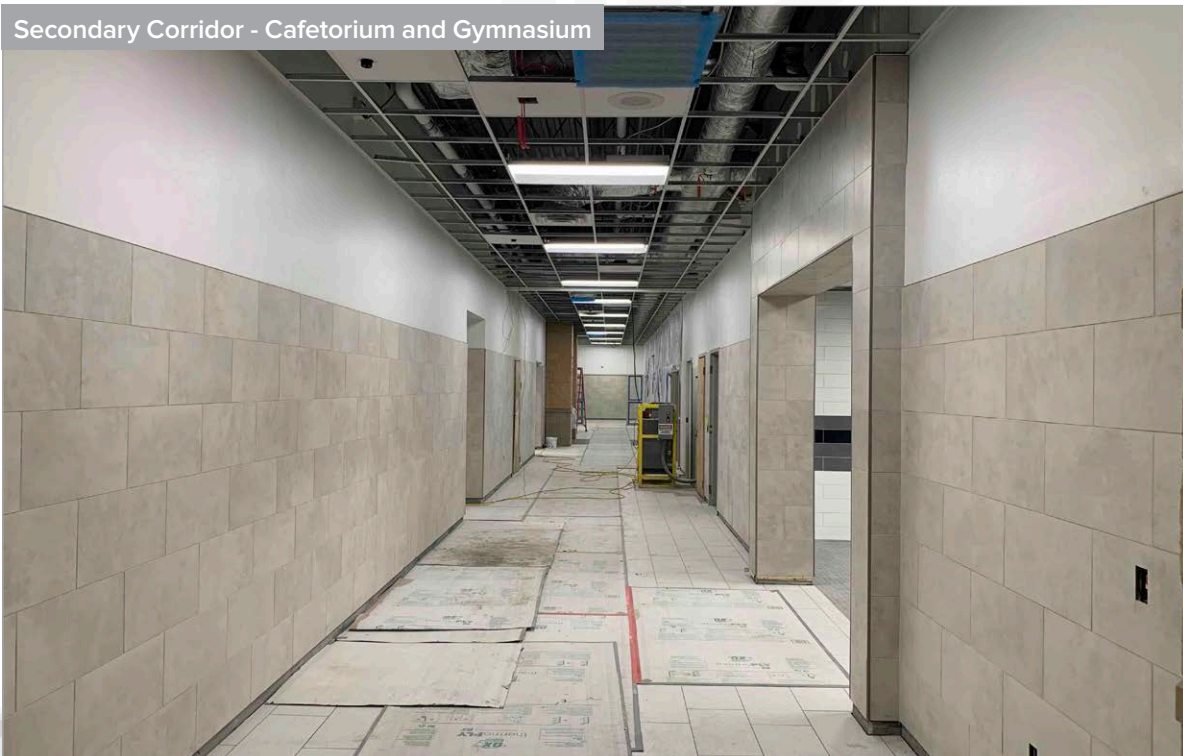
JOYCE HALL ELEMENTARY SCHOOL (ES #15)

AS OF MAY 2022

Classroom Casework



Secondary Corridor - Cafetorium and Gymnasium



BOARD UPDATE

PROSPER INDEPENDENT SCHOOL DISTRICT



JOYCE HALL ELEMENTARY SCHOOL (ES #15)

AS OF MAY 2022

Cafetorium Stage



Kitchen



BOARD UPDATE

PROSPER INDEPENDENT SCHOOL DISTRICT



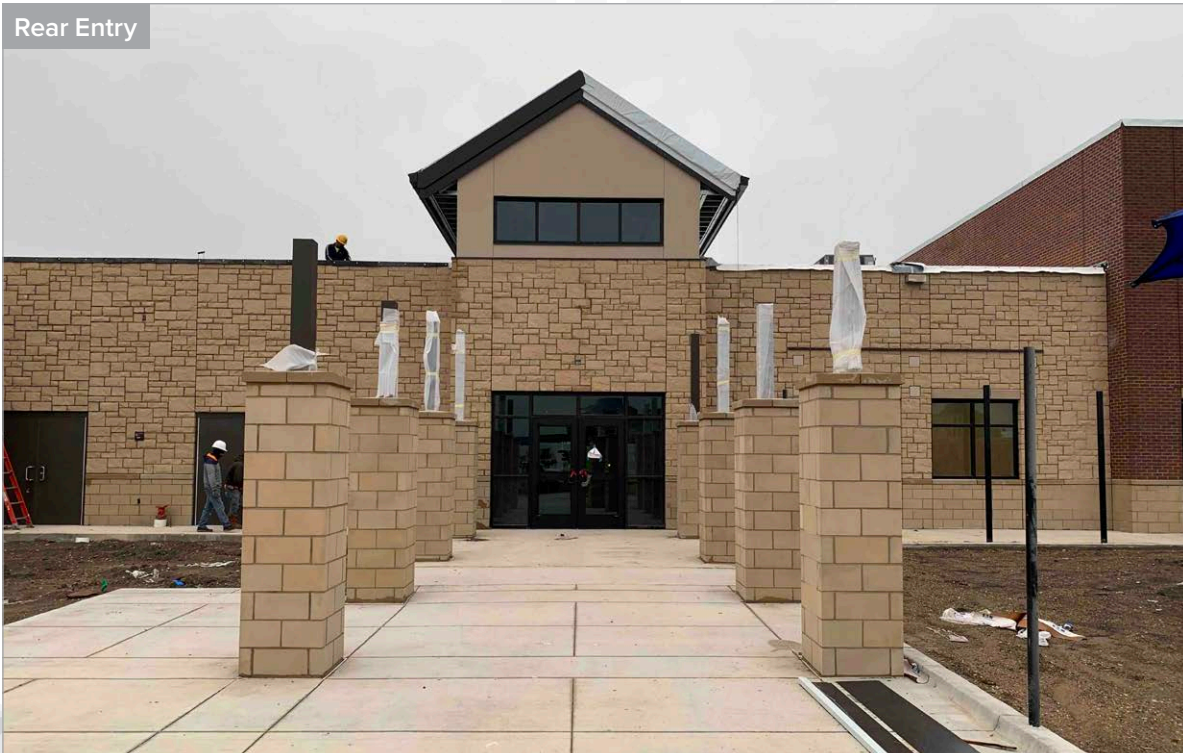
JOYCE HALL ELEMENTARY SCHOOL (ES #15)

AS OF MAY 2022

Gymnasium (Shelter)



Rear Entry



BOARD UPDATE

PROSPER INDEPENDENT SCHOOL DISTRICT



JOYCE HALL ELEMENTARY SCHOOL (ES #15)

AS OF MAY 2022

Hardcourt Play Area



BOARD UPDATE

PROSPER INDEPENDENT SCHOOL DISTRICT



WALNUT GROVE HIGH SCHOOL (HS#3)

AS OF MAY 2022

WORK COMPLETED AND ONGOING:

Site

- Baseball field drainage and plastic field covering installation complete. Installing gravel now
- Softball field drainage has started
- Backfilling of Retaining Wall C complete
- Forming remainder of Retaining Walls G and F now
- Baseball and softball batting cage structures have been erected. Cages will be completed following completion of Area U (MPF)

Main Building

- Steel erection complete – Areas A, B, C, Q, and R
- Steel erection ongoing – Areas D and S
- MEP/Fire Sprinkler overhead installation ongoing – Areas A, B, C, and Q
- Metal stud framing complete on first floor – Areas A, B, and C
- Metal stud framing ongoing on second floor – Area A
- Installation of CMU columns ongoing – Area D

- Interior CMU walls ongoing – Areas Q and R
- Roofing installation has started; Area A is dried in, and Area B is ongoing
- Window/Storefront installation has started; complete through Area A
- Exterior waterproofing complete – Areas A, B, and East Courtyard; ongoing – Area C
- Fireproofing complete on first floor and ongoing on second floor – Areas A, B, and C

Multipurpose Facility (MPF) and Ancillary Buildings

- CMU wall installation ongoing – Area T (MPF)
- Exterior masonry veneer ongoing – Area V (MPF)
- Steel structure complete – Area U (MPF); Roof strapping installation is ongoing
- CMU wall installation ongoing – Pump House (Ancillary)

Aerial - Looking Northeast



BOARD UPDATE

PROSPER INDEPENDENT SCHOOL DISTRICT



WALNUT GROVE HIGH SCHOOL (HS#3)

AS OF MAY 2022

Aerial - Looking Northwest



Aerial - Looking Southeast



BOARD UPDATE

PROSPER INDEPENDENT SCHOOL DISTRICT



WALNUT GROVE HIGH SCHOOL (HS#3)

AS OF MAY 2022

Aerial - Looking Southwest



Main Entry



BOARD UPDATE

PROSPER INDEPENDENT SCHOOL DISTRICT



WALNUT GROVE HIGH SCHOOL (HS#3)

AS OF MAY 2022

Looking North from Student Commons Area



East Academic Wing



BOARD UPDATE

PROSPER INDEPENDENT SCHOOL DISTRICT



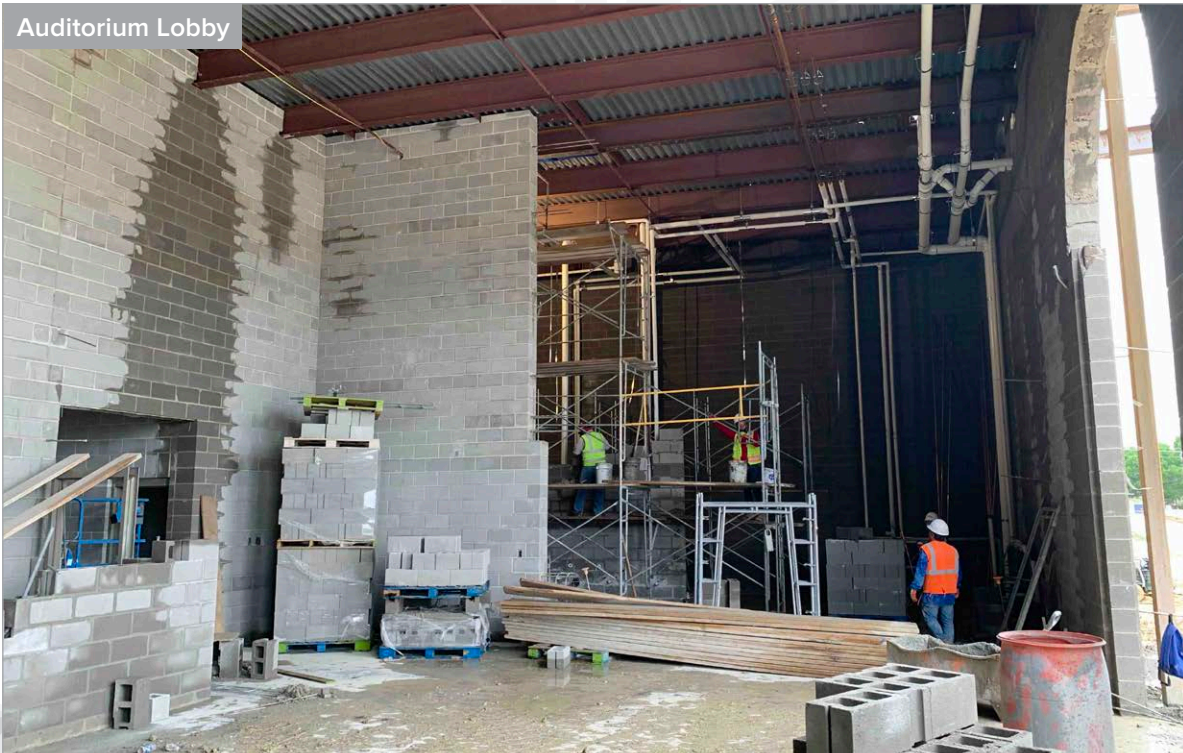
WALNUT GROVE HIGH SCHOOL (HS#3)

AS OF MAY 2022

Auditorium Entry



Auditorium Lobby



BOARD UPDATE

PROSPER INDEPENDENT SCHOOL DISTRICT



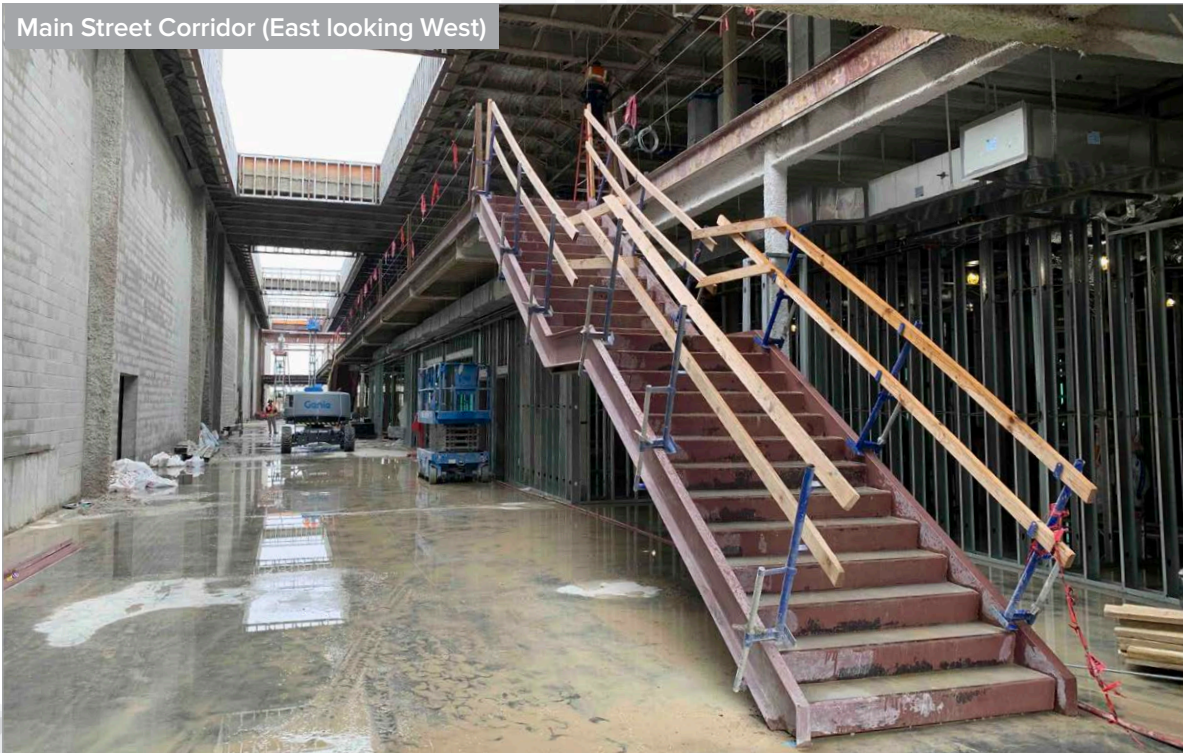
WALNUT GROVE HIGH SCHOOL (HS#3)

AS OF MAY 2022

Auditorium



Main Street Corridor (East looking West)



BOARD UPDATE

PROSPER INDEPENDENT SCHOOL DISTRICT



WALNUT GROVE HIGH SCHOOL (HS#3)

AS OF MAY 2022

East Academic Wing Courtyard



Metal Studs and Overhead MEP on First Floor



BOARD UPDATE

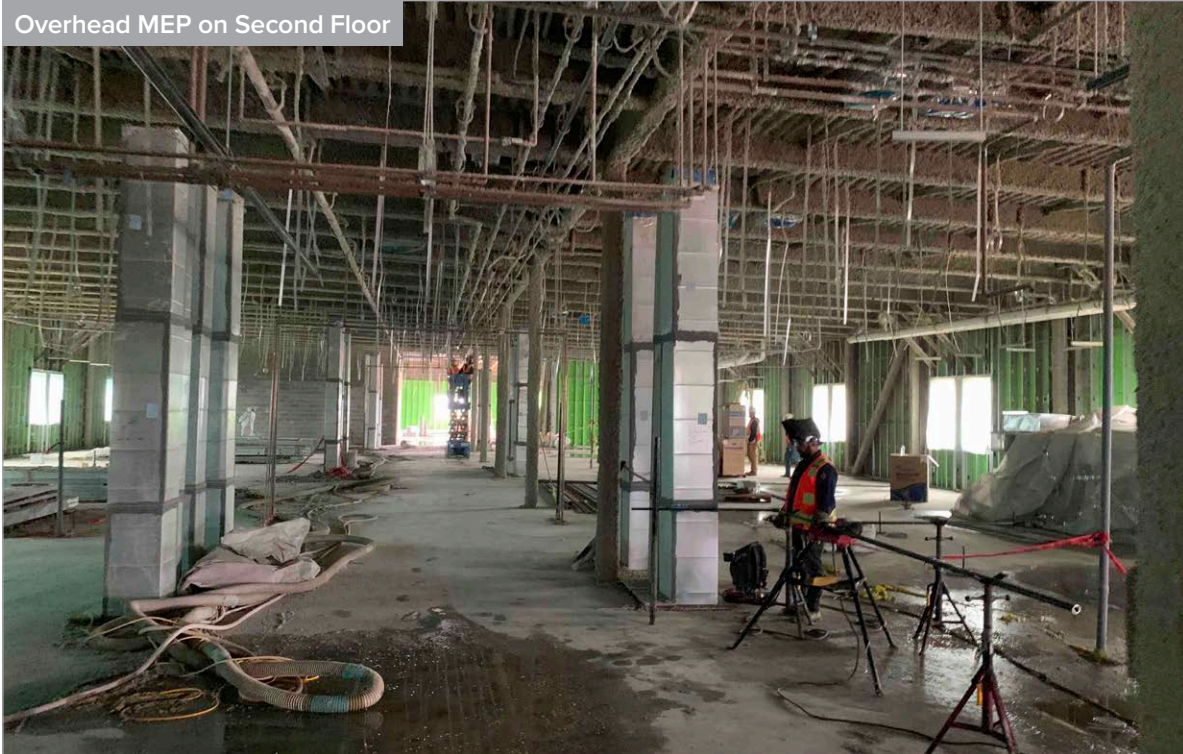
PROSPER INDEPENDENT SCHOOL DISTRICT



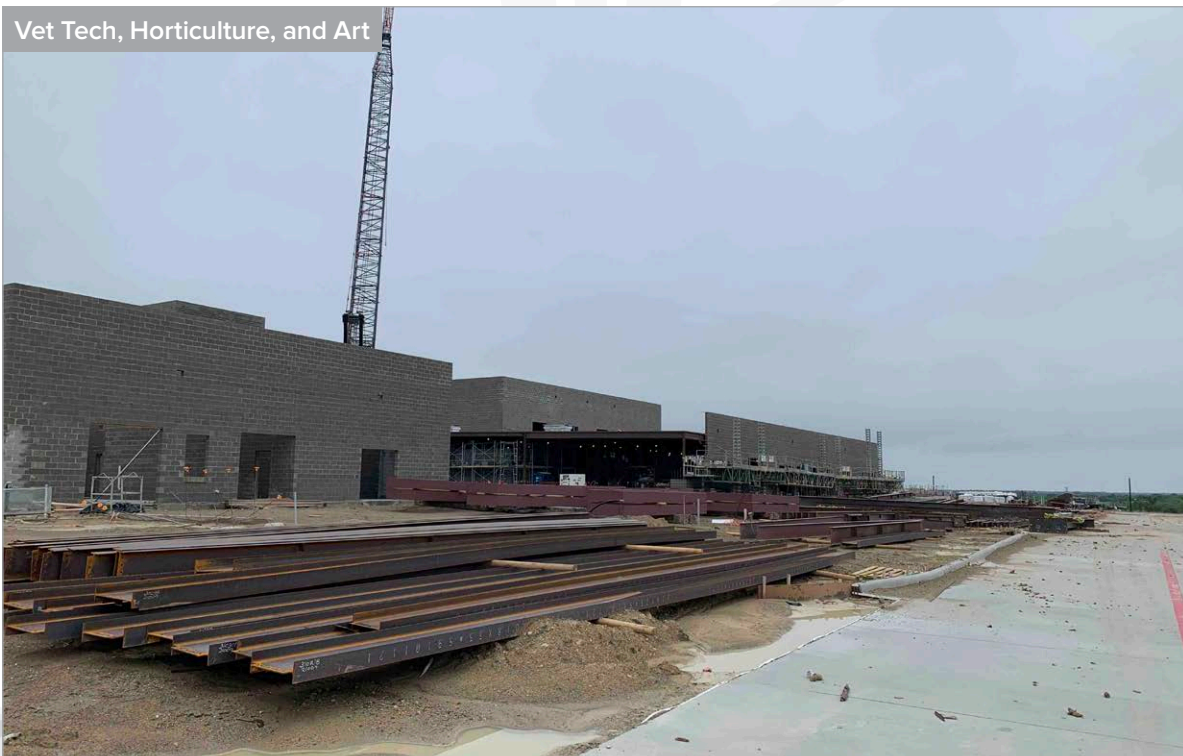
WALNUT GROVE HIGH SCHOOL (HS#3)

AS OF MAY 2022

Overhead MEP on Second Floor



Vet Tech, Horticulture, and Art



BOARD UPDATE

PROSPER INDEPENDENT SCHOOL DISTRICT



WALNUT GROVE HIGH SCHOOL (HS#3)

AS OF MAY 2022

Student Commons from Second Floor



Steel Staging and Erection of West Academic Wing



BOARD UPDATE

PROSPER INDEPENDENT SCHOOL DISTRICT



WALNUT GROVE HIGH SCHOOL (HS#3)

AS OF MAY 2022

Multipurpose Facility (MFP)



Installing Gravel Base for Synthetic Surface



BOARD UPDATE

PROSPER INDEPENDENT SCHOOL DISTRICT



WALNUT GROVE HIGH SCHOOL (HS#3)

AS OF MAY 2022

Softball Field and Indoor Cage

